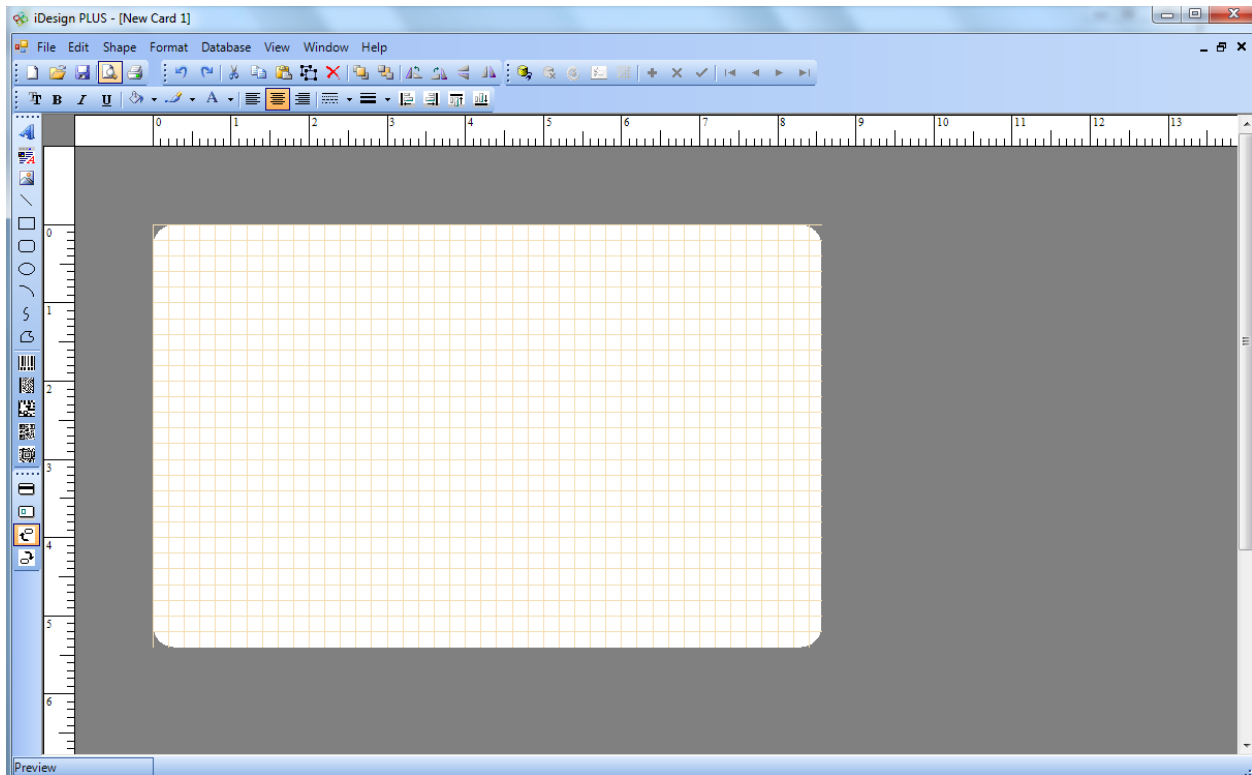


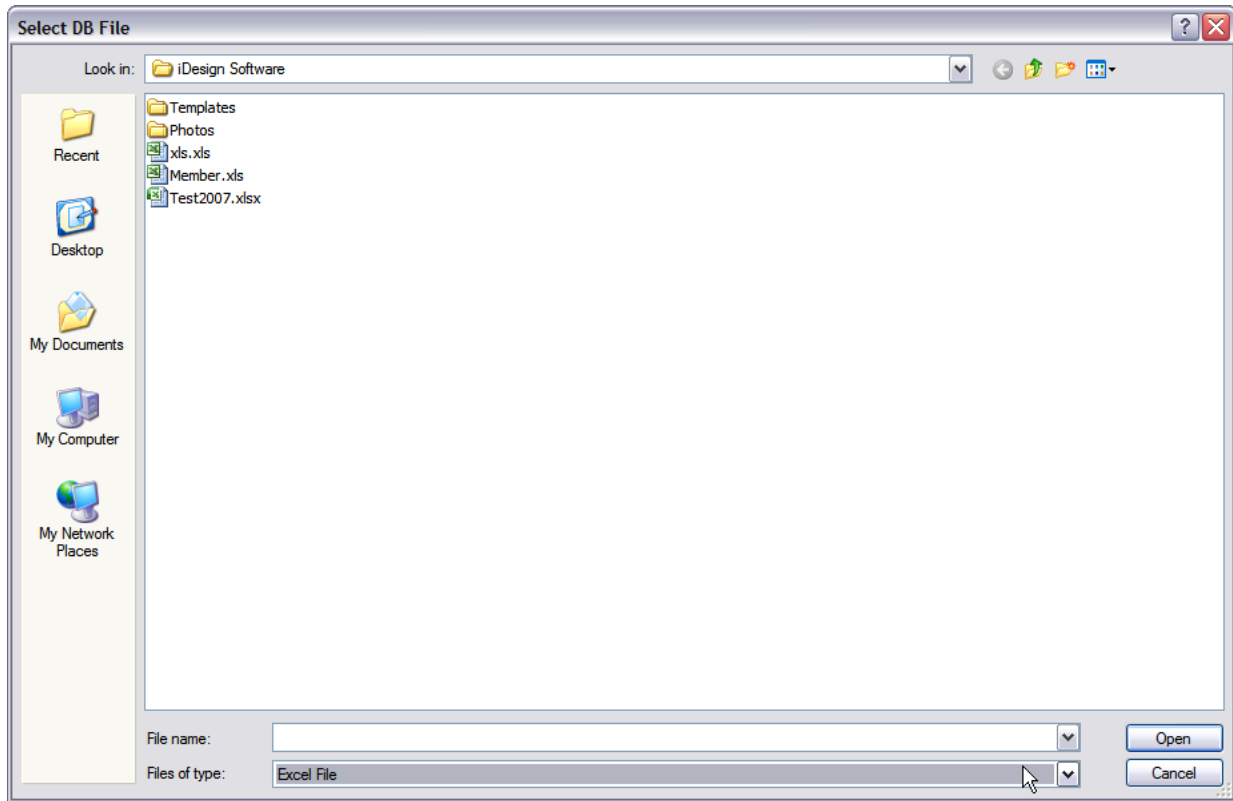
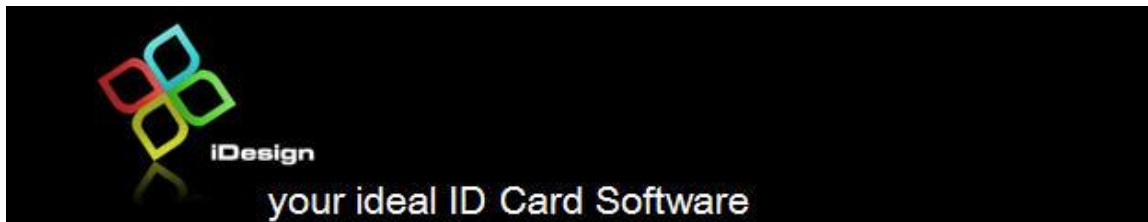
How to connect to Excel file?

To connect to an Excel file, select from the menu bar Database > Connect or click on

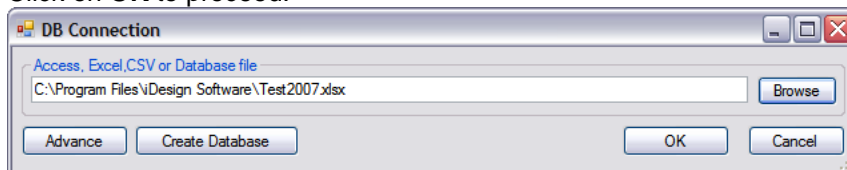


Click **Browse** to explore your folder containing the excel file you want.

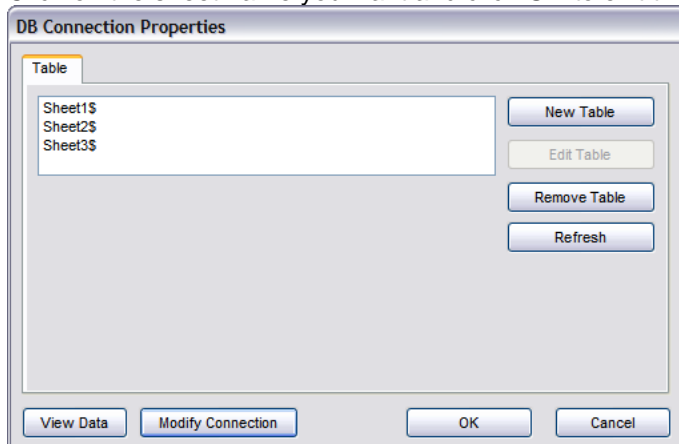
Select the right format from the dropdown list before double clicking on the right xls or xlsx file you want.

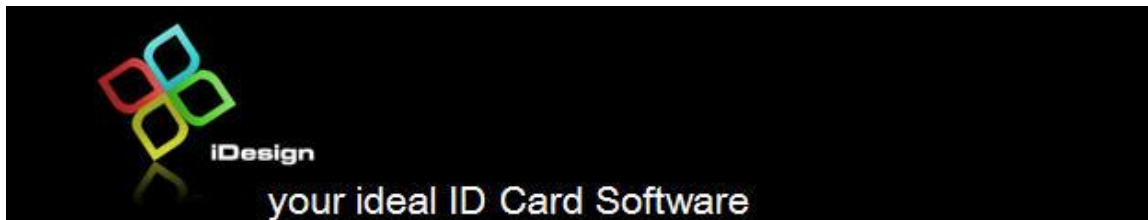


Click on **OK** to proceed.

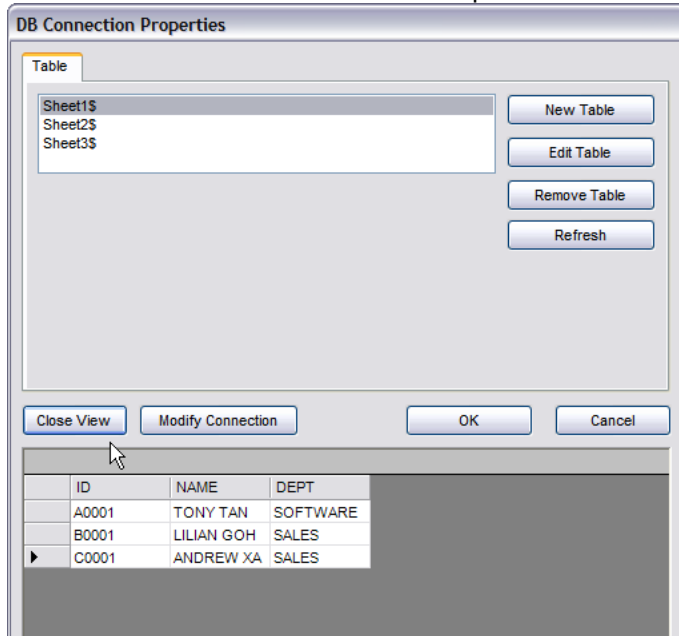


Click on the sheet name you want and click **OK** to exit this screen.





You can also click on the **View Data** to preview the set of data that you have selected.



Click on **Modify Connection** to change another xls or xlsx Excel file if you need. Just click **OK** to exit.

Note: Excel format files do not allow you to save pictures within the file. You have to store the pictures in a specified folder. Refer to the section on *To link objects with data manually* of Section 5.1 Existing Database Connection for details. Strictly no record adding or deleting for Excel format files within iDesign. However, you can edit the data and save it.

Refer to the section on *To auto-link objects with data* of Section 5.1 Existing Database Connection to create a template by dragging the individual field into the template.