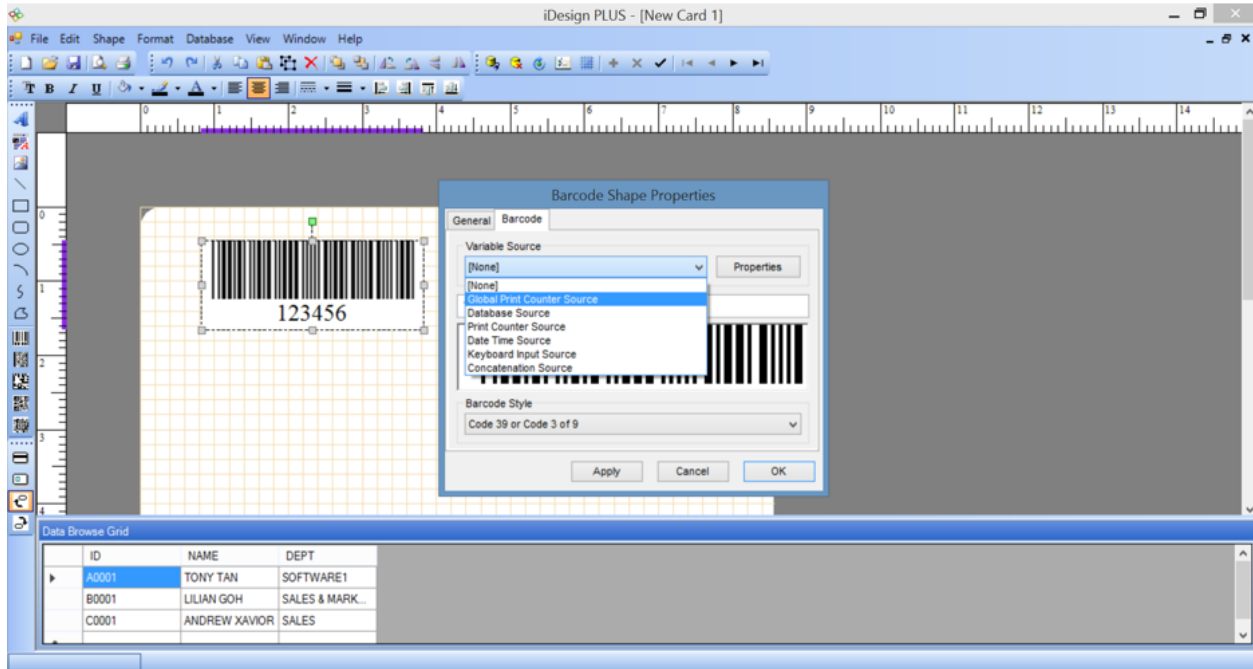
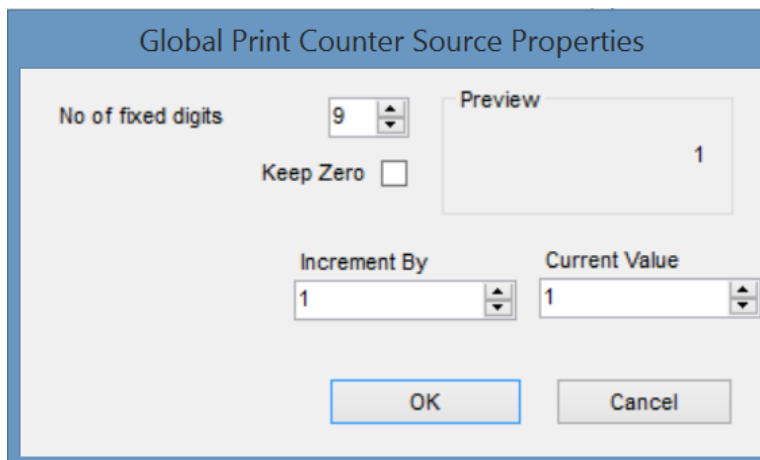


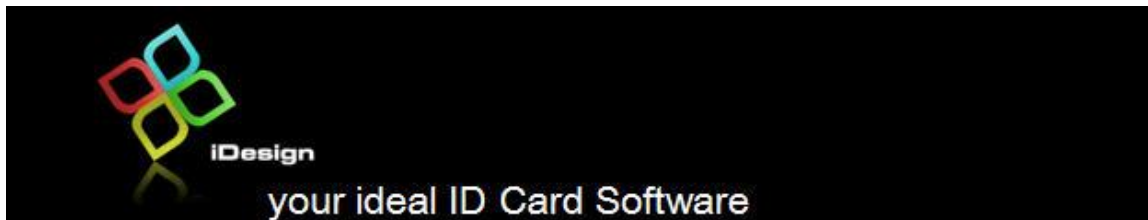
How to add global print counter?

To add global print counter to your template, right click on the text/ barcode object that you want like it to be converted to a global printer counter, select Properties. Under the text/barcode tab, select **Global Print Counter Source** from Variable Source dropdown list and click **Properties** button.



The system will prompt the following screen for you to specify.





The list of fields to specify:

No of fixed digits

Allows you to choose the number of digits you want the counter to have. Default value is 9.

Keep Leading zero

Check the box if you would like to keep the leading zero/zeros. Default value is unchecked.

Increment by

Type or select the increment value for the counter after each print. Default value is 1.

Current value

Type or select the current value to print. Default starting value is 1.

Preview

Displays a preview for the global counter variable.

Select **OK** button upon completion or **Cancel** button to exit this screen.